

Harding County School News

Establishing a Foundation for Future Endeavors

Josh Page

Superintendent

Kelly Messmer

Principal / AD

Elizabeth Henderson

Business Manager

▪ 12474 Tipperary Street ▪ Box 367 ▪ Buffalo, SD 57720 ▪ Phone: 605-375-3421 ▪ Fax: 605-375-3246 ▪ hardingcounty.k12.sd.us ▪

From the Superintendent's Desk -

On behalf of the staff at Harding County Schools, I am happy to welcome you to the 2025-2026 school year. I hope you have had a restful and relaxing summer break with family and friends. Our staff strives daily to create and maintain a supportive learning environment in order for all students to have a school year rooted in success. We believe that one of the cornerstones of student success is effective communication. In order for this to happen, our children need support from both home and school. Our families are our partners in education, and it is important for you to know that we value your contributions to our schools. With that, we have high expectations and appreciate the support network from home as well.

There is no greater cause than educating our young people and helping to prepare them for the future. I am confident this will be a fantastic school year, and that we will all work together to make it so! I appreciate your ideas, concerns and questions. The ways to contact me is by calling the school or drop me an email at josh.page@k12.sd.us.

With Rancher Pride,
Mr. Josh Page
Superintendent



We will use the following modes of communication to share information:

- Remind App
- ClassDojo (Grades K-5)
- District Facebook page
- District Website:
hardingcounty.k12.sd.us
- School phone messages

Please let the school know if you need to be added to the Remind App or school phone tree.

Parent Portal

This is the place to check grades, attendance, lunch bills, and more. You can pay your lunch bill online with a credit card or e-check, too!

If you lost your login info or need to get signed up, call Jeana at the front office.



August / September Dates to Remember

Aug 20: First Day of School

Aug 22: Friday School

Sept 1: No School – Labor Day

Sept 2: 10am Start

Sept 5: Friday School

Sept 10: Picture Day

School Board Meeting, 5:30pm

Sept 22-26: Homecoming Week

Sept 16: Friday School

Sept 29, Oct 1,3: P/T Conferences

Activity Pass Prices

Student Pass: \$15
Single Adult Pass: \$30
Couple Adult Pass: \$50

Adult Gate: \$5
Student Gate: \$2

Order now for early pick-up!

2024 - 2025 Yearbooks

Are available at the front office.
\$30 each

A Message from Mr. Messmer

I want to take this opportunity to welcome everyone back to the 2025-26 school year. I hope everyone has had an enjoyable and restful summer. Although it is nice to look forward to the summer break, it is also nice to look forward to the first day of school. If you have any questions or concerns, please do not hesitate to contact me as I will do my best to answer any questions you may have.

Communication, as always, is a key factor in making sure we have a successful year. I would like to remind you to please contact Ray Ginsbach if you need any changes made to your phone numbers for the automated phone system. I strongly urge everyone to have their cell number added to the "Remind" app. The "Remind" app is an easy way for parents/grandparents/community members to get messages from the school sent directly to your phone. If you want to be added to Remind, please contact the school with your cell phone number(s). If you are currently receiving "Remind" notices, there is no need to contact the school.

The athletic season practices are under way, and we will soon be hosting games and traveling to games to watch the girls and boys throughout the state. Inevitably there will be changes to the current schedule, so I ask that everyone watch the district website, district Facebook page, and the Remind app to make sure they get the information in a timely manner.

I look forward to seeing all of you on the first day of school, Wednesday, August 20!



We would like to congratulate the inaugural class of the Harding County "Hall Of Fame"

2025 Inductees:

Don Ostensen

Wally Stephens

Tanna Negaard Zabel

Ab Penn

These individuals will be honored during Homecoming Week.

Congratulations to South Dakota Region 5 Teacher of the Year

Jennifer Anders

Mrs. Anders is a Finalist for South Dakota Teacher of the Year!

School Lunch Information

Lunch prices have increased this year. Elementary meals are \$4.00 and MS/HS meals are \$4.50. Meals are \$0.40/each for all K-12 students who qualify for reduced price meals.

We recognize the needs in our community and welcome all families to submit Free & Reduced Meal Applications. These applications are used for more than determining eligibility for free and reduced-price meals. They can help us receive more grant funding and other federal assistance and keep kids qualified for the next school year.

Applications are included in this packet as well as available on our website and at the school office. A family can submit an application at any time during the school year. All applications are confidential. If you have any questions, please let us know. We are more than happy to help!

Remember, you can pay your lunch bills in office or online through Parent Portal.



Harding County School District Activity Pass / Yearbook Order Form

2024 - 2025 Tatanka Yearbook	_____	X	\$30.00	=	_____
Student Passes (Grades K-12)	_____	X	\$15.00	=	_____
Adult Pass - Single	_____	X	\$30.00	=	_____
Adult Pass - Couple	_____	X	\$50.00	=	_____
Senior Pass (Age 65+)	_____				
Total Due					_____

Please make checks payable to *Harding County School District*.

Mail to: HCHS, Box 367, Buffalo, SD 57720 or Return to School Office

Names on Passes

Students: _____

Adults: _____

Seniors: _____

Activity Passes

- | | |
|----------------------------------------------------------------|-------------------------------------------------|
| <input checked="" type="checkbox"/> Football (home & at Bison) | <input type="checkbox"/> Conference Tournaments |
| <input checked="" type="checkbox"/> Volleyball (home) | <input type="checkbox"/> District Tournaments |
| <input checked="" type="checkbox"/> Girls Basketball (home) | <input type="checkbox"/> Region Tournaments |
| <input checked="" type="checkbox"/> Boys Basketball (home) | <input type="checkbox"/> State Tournaments |

Yearbooks

These are yearbooks from *last school year, 2024-2025*.

*While supplies last-orders will be processed in the order received.

Additional copies of previous editions may be available. Please contact the school office if you are in need a specific edition. Quantities are limited.

Office Use Only:

Date _____ Cash /Check # _____ ☐ P _____ ☐ Y _____

Harding County School District


Lunch Menu

August 2025

Monday 18	Tuesday 19	Wednesday 20	Thursday 21	Friday 22
		Chicken burger Tots Carrot sticks Fruit	Sausage Pizza Lettuce Fruit	Hot dogs Beans Chips Fruit
Monday 25	Tuesday 26	Wednesday 27	Thursday 28	Friday 29
Chicken nuggets Fries Garlic bread Fruit	Ham Mashed Potatoes Corn Bun Fruit	Taco tots Lettuce Fruit	Pulled pork Sandwich Chips Macaroni Salad Fruit	

All meals served with 1% milk or chocolate skim milk and salad bar.

AUGUST 2025

Sun	Mon	Tue	Wed	Thurs	Fri	Sat
					1	2
3	4	5	6	7 FB Practice Starts	8	9
10	11 XC Practice Starts	12	13 School Board Meeting 5:30	14 VB Practice Starts	15	16
17	18 Teacher In-Service JHVB & JHFB Practice Starts JVFB @ Bison vs TL 6:00	19 Teacher In-Service Back To School Night 4:30-6:30	20 First Day of School	21	22 Friday School FB vs Gettysburg 6:00	23
24	25	26	27	28 VB (ABC) @ TL 4:00	29 XC @ Bowman 9:00 FB @ Wall 6:00	30
31						



Harding County School District 31-1

2025 - 2026 School Year



August 2025

S	M	T	W	Th	F	S
					1	2
3	4	5	6	7	8	9
10	11	12	13	14	15	16
17	18	19	20	21	22	23
24	25	26	27	28	29	30

September 2025

S	M	T	W	Th	F	S
	1	2	3	4	5	6
7	8	9	10	11	12	13
14	15	16	17	18	19	20
21	22	23	24	25	26	27
28	29	30				

October 2025

S	M	T	W	Th	F	S
			1	2	3	4
5	6	7	8	9	10	11
12	13	14	15	16	17	18
19	20	21	22	23	24	25
26	27	28	29	30	31	

November 2025

S	M	T	W	Th	F	S
2	3	4	5	6	7	1/8
9	10	11	12	13	14	15
16	17	18	19	20	21	22
23	24	25	26	27	28	29
30						

December 2025

S	M	T	W	Th	F	S
	1	2	3	4	5	6
7	8	9	10	11	12	13
14	15	16	17	18	19	20
21	22	23	24	25	26	27
28	29	30	31			

January 2026

S	M	T	W	Th	F	S
				1	2	3
4	5	6	7	8	9	10
11	12	13	14	15	16	17
18	19	20	21	22	23	24
25	26	27	28	29	30	31

February 2026

S	M	T	W	Th	F	S
1	2	3	4	5	6	7
8	9	10	11	12	13	14
15	16	17	18	19	20	21
22	23	24	25	26	27	28

March 2026

S	M	T	W	Th	F	S
1	2	3	4	5	6	7
8	9	10	11	12	13	14
15	16	17	18	19	20	21
22	23	24	25	26	27	28
29	30	31				

April 2026

S	M	T	W	Th	F	S
			1	2	3	4
5	6	7	8	9	10	11
12	13	14	15	16	17	18
19	20	21	22	23	24	25
26	27	28	29	30		

May 2026

S	M	T	W	Th	F	S
					1	2
3	4	5	6	7	8	9
10	11	12	13	14	15	16
17	18	19	20	21	22	23
24	25	26	27	28	29	30

Legend:

	School In Session
	Teacher in Service/Work Days
	Holidays – No School
	School Makeup Day (if needed)

Teacher Work Days:

8/18, 8/19, 10/3, 10/17, 12/12, 1/16,
2/13, 3/6, 5/13, 5/14

First Day: 8/20

Fall PT Conferences: 9/29, 10/1, 10/3

Homecoming Week: 9/22 – 9/26

Christmas Break: 12/22 – 1/4

Spring PT Conferences: 2/9, 2/11, 2/13

Easter Break: 4/3 – 4/6

HS Graduation: 5/9

Last Day: 5/12

Designated Make Up Days: 3/27, 4/10, 4/17

Friday School: 8/22, 9/5, 9/26, 12/19

of Student Contact

Days = 143 total

Aug	7
Sept	19
Oct	18
Nov	14
Dec	13
Jan	16
Feb	15
Mar	18
Apr	17
May	6

*45 hours are built into this calendar for State Tournaments/ Snow Days/Late Starts. Anything over 45 hours will be made up on assigned make-up days as needed.

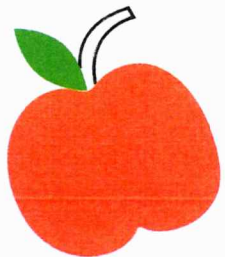
End of 1st Qtr: 10/16

End of 2nd Qtr/1st Sem: 12/19

End of 3rd Qtr: 3/5

End of 4th Qtr/2nd Sem: 5/13

Hc
Ranchers

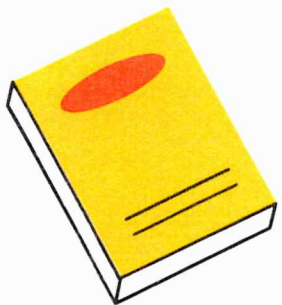


Harding County School District



BACK TO SCHOOL

Open House



Tuesday, August 19th
4:30 - 6:30pm



Meet your teachers and see your new classroom!

Staff will be serving hot dogs, chips, and drinks!

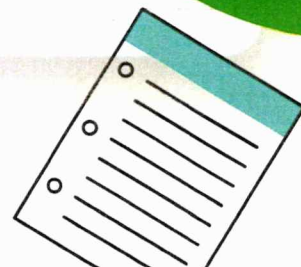
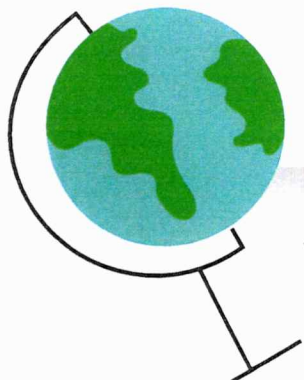
All students in Grades K - 12 are welcome to attend!

Title One Information will be available.

12474 Tipperary St
Buffalo, SD 57720

Questions: 605-375-3241

School
Starts
August 20





Student Injuries Can Happen

Medical Expenses Can Be a Financial Hardship When the Unexpected Occurs

Approved By Your School/School District - Available for All Students PK-12

What is Student Accident Insurance?

- ◆ Coverage that provides financial assistance with your out-of-pocket medical expenses when your student sustains an accidental bodily injury.

Why Consider Student Accident Insurance For Your Student?

- ◆ High Deductible/Copayments to your Family's Primary Health Insurance
- ◆ No Health Insurance for your Student
- ◆ Your Student participates in an interscholastic sport where an unexpected injury is more likely to occur.
- ◆ Your Student is prone to injuries

Coverage Options Available Through Your School

- ◆ School Time Coverage - \$16.00
 - ◆ Interscholastic Sports Coverage
(w/School Time-\$91.00 or 24 Hour Coverage-\$174.00)
 - ◆ 24-Hour/Full-Time Coverage - \$99.00
 - ◆ Football Coverage - \$250.00
(Grades 9-12 for the football season)
 - ◆ Extended Dental Coverage - \$9.00
- Premium Paid Once a School Year**

To Enroll Your Student & Review Medical Benefits

Go to: www.sas-mn.com

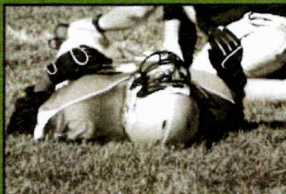
*or scan this QR code with
your smart phone to be
directed to our website*



Please locate "K-12 Students & Parents" on our homepage. Within this division, you will be able to search for your student's school district. Once located, you will have access to the following information:

- ◆ **Purchase Coverage**
(Managed Online or by Printing/Mailing Enrollment Form and Premium)
- ◆ **Brochure (English & Spanish)**
(Explains medical benefits, exclusions and coverage options)
- ◆ **Claim Form**
(Fillable form when enrolled student sustains an injury)

For Questions, Call Student Assurance Services at (800) 328-2739



Specializing in Student Accident Insurance Since 1971.

The above information is just a brief description of Student Assurance Services student accident insurance. For more information including costs, benefits, effective dates, exclusions, limitations, please refer to www.sas-mn.com Students are able to purchase coverage only if his/her school district is a policyholder with the insurance company